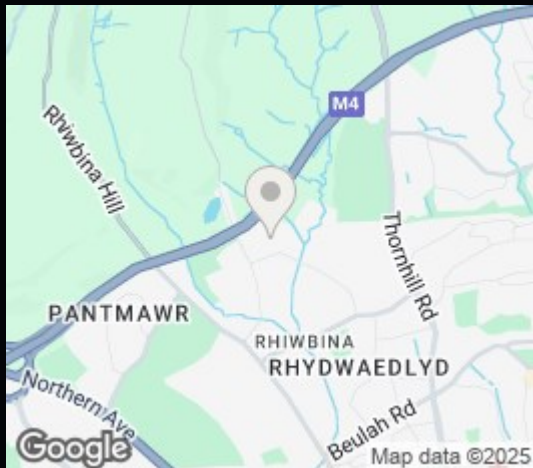


THOMAS H
WOOD

4, Clos-y-Graig,
Rhiwbina,
Cardiff,
CF14 6SN

3 Bed House - Semi-
Detached

£1,500 PCM



This is a three bedroom house of some quality and substance. Tastefully appointed throughout having been completely modernised, accommodation includes shower room, two bedrooms and open plan kitchen living room to the ground floor with en suite bathroom to master on first floor. Located on a quiet residential culture-de-sac favourably close to the woodlands of the Wenallt and within a short walk of the Deri pub and Deri stores. Unfurnished with integrated kitchen appliances. Driveway and garage. Off road parking. Council Tax band E. EPC rating D. Gas central heating. Available October 2025 for a minimum twelve month term.



3



2



1



D

£1,500 PCM

CONTACT

EMAIL

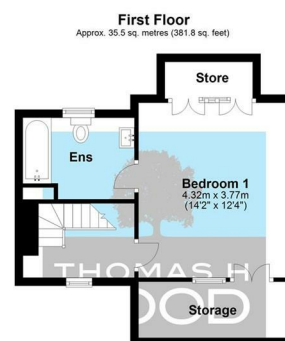
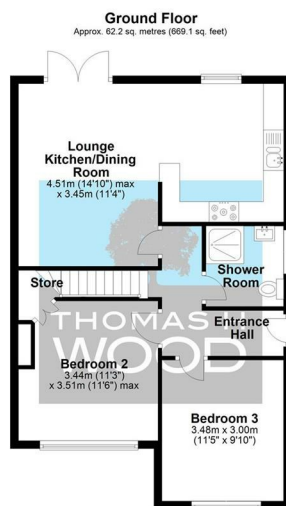
lettings@thomashwood.com

TELEPHONE

02920 626252

WEBSITE

Energy Efficiency Rating		
	Current	Potential
Very energy efficient - lower running costs		
(92 plus) A		86
(81-91) B		
(69-80) C		
(55-68) D	64	
(39-54) E		
(21-38) F		
(1-20) G		
Not energy efficient - higher running costs		
England & Wales	EU Directive 2002/91/EC	



Total area: approx. 97.6 sq. metres (1050.9 sq. feet)